



# KAR LIFT WHEEL ALIGNMENT KLSP18ALORR1LT

**VERTICAL PLATFORM LIFTING SCISSOR LIFT  
UNIQUE PANTOGRAPH DESIGN LIFTS HIGHER, LIFTS FASTER  
AND STAYS LEVEL ALL THE TIME.**

## KAR LIFT ALIGNMENT

**18,000 LB. / 8.2T CAPACITY**

**RUNWAYS 17', 18' OR 20' / 5.2, 5.5 OR 6M LONG**

**THE WORLDS MOST PRODUCTIVE & PRECISE  
WHEEL ALIGNMENT LIFT**



#KLSP18ALORR1LT

### FEATURES



Exclusive "Volumetric" Control - 220v 1 phase



Built in Pneumatic Rear Slip Plates



9,000lb. (4.1T) Lifting Tables

OMER NORTH AMERICA INC. 2300 SPEERS RD OAKVILLE ONTARIO - (877)-799-5438 - SALES@KARLIFTSOLUTIONS.COM

JUNE 2017

# KAR WHEEL ALIGNMENT

## 18,000 LB./ 8.2T

# KLSP18ALORR1LT

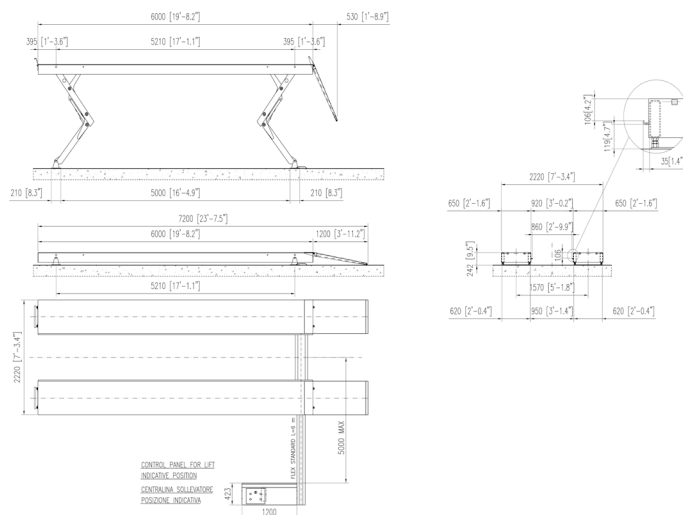
AT OMER OUR GOAL IS TO BUILD LIFTS THAT LAST LONGER, PERFORM BETTER AND COST LESS TO OPERATE

SPECIFICATIONS	
Capacity	18,000 lb. (8.2T) (also available in 16,000lb. (7.3T and 12,000lb (5.5T))
Overall Length (Surface Mounted)	259.1" / 275.6" or 291.3" / 6581mm, 7000.2 or 7399mm
Runway Lengths	17', 18' or 20' / 5.2M, 5.5M or 6M
Runway Width	25.6" / 1412.2mm
Overall Width	87.4" to 98" / 2220mm to 2489.2mm
Collapsed Height	11.4" / 290mm
Lifting/Lowering Time	70 sec.
Raised Height	81" / 2057mm
Length of Rear Slip Plates	91.1" / 2314mm
Maximum 4 wheel alignment	185", 197" or 205" / 4699, 5004 or 5207mm
Minimum 4 wheel alignment	75.5" / 1918mm
Maximum Service Wheel Base	196", 208" or 224" / 4987.4, 5283.2 or 5689.6mm
Certification	ALI Certified - ANSI AL CTV 2011
ISO Certified Factory	Yes
Control	Volumetric Hydraulic/Mechanical
Synchronization	Hydraulic Displacement with Torsion Bar
Noise Level	< 75 decibels
Power Requirement	220 volt single phase 60hz - 20amp
Shipping Weight	5,960 lbs / 2909kg.
Finish	Double Bake Powder Coat optional Hot Dip Galvanizing
Power Requirement	3HP/ 2.2kw - 116psi/ 8 bar

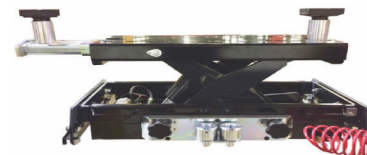
## FEATURES

- Built to higher quality standard; - built in Mirano Italy by O.M.E.R spa. Premium Siemens 3HP / 2.2kw motor and BOSCH pump.
- Superior structural strength provides longer life and more precise alignments - Multipiece boxed style runway structure will not flex or sag. Purpose built hollow structure lifting legs.
- Greater flexibility with more models to choose from - Available in surface or flush mounted, alignment or service deck. Optional 9,000lb. (4T) runway lifting tables with standard jacking beam rails provided.
- Premium options and accessories can expand the capabilities and service life - Stainless steel radius plates, built in tire inflation hoses, removable work steps, LED runway lighting and premium heavy duty extended life 5 year warranty HD jacking beams
- Lower maintenance costs - steel components are wheel-abrator shot blasted and acid washed before a "double bake" powder coat finish is applied. Zirk style grease fittings at all hinge points. Optional Hot Dip galvanizing of complete structure for extreme conditions.
- Precision levelling feature provides more accurate alignments - exclusive "volumetric" control maintains level to within less than 1/4" / 5mm. No electronic sensors are required on the lift or PLC/PC Board. No fault codes are required.
- Low pressure hydraulics provides longer life - four low pressure inverted cylinders are mounted under the runway for protection. Cylinders operate at <3800psi/260bar at full capacity.
- Designed for greater technician productivity - there are no obstructions between the runways or base frame. The lift rises 81" / 2057mm in 71 seconds with 18 locking positions. Built in runway compressed air outlets front and rear.

## EQUIPMENT DRAWING

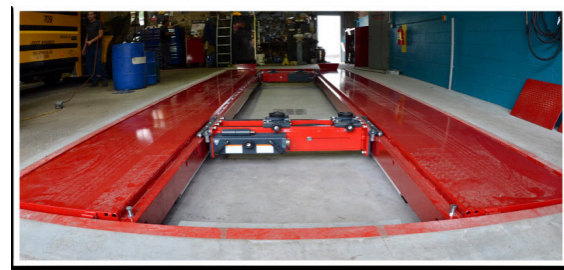


## EQUIPMENT OPTIONS



Premium  
9,000lb. Jacking  
Beams

Optional Flush Mount,  
Drive Through or Service



**CONTACT US NOW**

WWW.KARLIFTSOLUTIONS.COM  
2300 SPEERS RD OAKVILLE ONTARIO  
CALL (877) 799-5438

WWW.OMERLIFTS.COM  
MIRANO ITALY  
CALL (+39) 041 5700303

