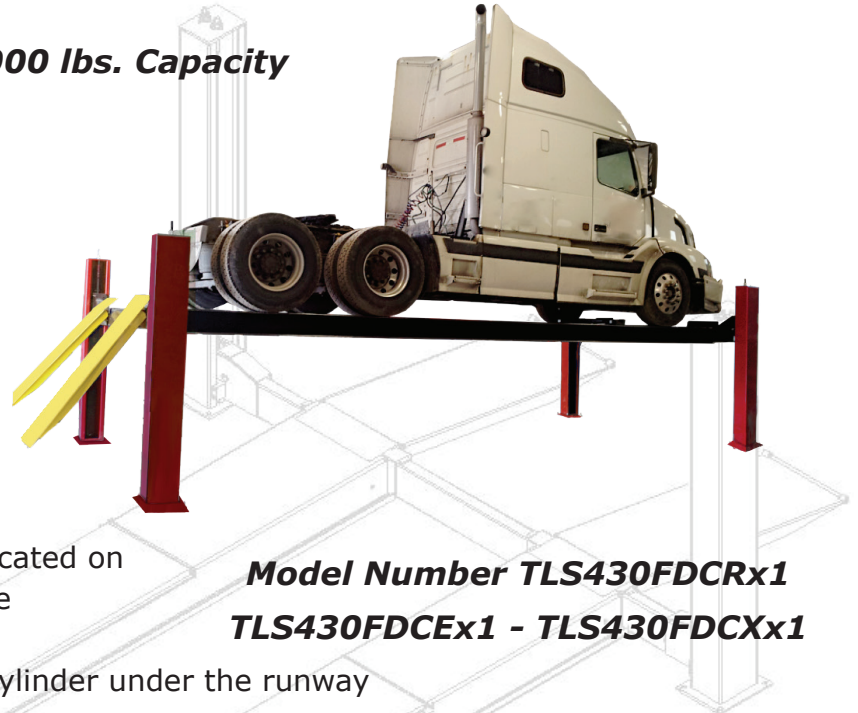


## TLS FOUR POST PLATFORM LIFT

**30,000 lbs. Capacity**

- Flat Deck models -  
Choice of three different lengths
- 24" wide adjustable runways
- Solid 13" Pulleys and 5/8" DIA  
Steel cables
- 
- Air Operated Stainless Steel Air  
release cylinders



**Model Number TLS430FDCRx1  
TLS430FDCEx1 - TLS430FDCXx1**

- Powerpack operator controls can be located on  
front driver side or rear passenger side
- 
- No vehicle door damage with hidden cylinder under the runway
- 
- Adjustable safety lock ladders level the runways and compensate for uneven floors
- 
- Add optional rolling air/hydraulic jacks for the ultimate in complete vehicle servicing

230V - 1 phase - 60 Hz - 20 Amp power required  
(optional 230V - 3 phase powerpack available)

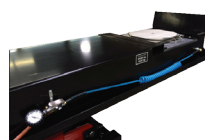
### Available Accessories & Options



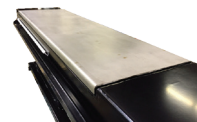
**Rolling Air/  
Hydraulic Jacks  
TLSJ9000**



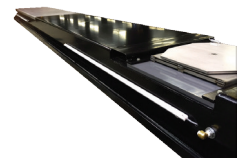
**Stainless Steel  
Turnplates  
TLSSSTP**



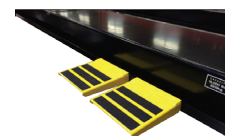
**Built in Tire  
Inflation Hoses**



**Stainless Steel  
Rear Slip Plates**



**LED Runway  
Lighting**



**Runway Step  
Platforms**

<b>SPECIFICATIONS</b>	<b>TLS430FDCRx1</b>	<b>TLS430FDCXx1</b>	<b>TLS430FDCEx1</b>
Capacity	30,000 lbs		
Overall Length	328 <sup>1</sup> / <sub>2</sub> "	364 <sup>1</sup> / <sub>4</sub> "	400 <sup>1</sup> / <sub>4</sub> "
Deck Length	261"	297"	333"
Overall Width	150"		
Deck Width	24"		
Lowered Height	10"		
Raised Height	70 <sup>1</sup> / <sub>4</sub> "		
Minimum Wheelbase	230"		
Maximum Wheelbase	231"	267"	303"
Lift Time	100 seconds		
Power Requirements	230 V AC - 60Hz - 1Ph - 20 Amp		
Shipping Weight	7,500 lbs		

